



# Zagare Mansion Park



# Zagare Mansion Park formation and history



Facade of G. Naryskinas manor house in 1905.



Naryskinai relatives representatives (sitting) with the manor staff at the palace in the 2nd decade of the 20th century.

- Zagare Manor is one of the largest manors in Lithuania.
- The manor of New Zagare has been mentioned in historical sources since the beginning of the 16th century. It has been governed by different governors in separate periods. In 1795 Russian Empress Catherine II presented New Zagare Manor to her favorite Count Platonas Zubovas.
- An old family of Russian nobles - landlords Naryskinai – bought Zagare Manor in 1858 for 1 million tsarist rubles from Zubovai and established their summer and hunting residence in Zagare.
- During Zubovai times, the manor was wooden, but Naryskinai rebuilt the manor. The classicist manor ensemble was finally formed in the end of 19th century.





# Zagare Mansion Park formation and history



Complex of the stud farm, riding hall and coach house



Windmill in 1935.

- The mansion-house surrounded by trees, a stud complex, household buildings, a mill and houses of the mansion servants show up on the plain relief.
- Complex of the stud farm, riding hall and coach house is a striking accent of the manor. It was built in 1900 when the stud farm had to be extended. Materials of good quality were used for building the stud farm, riding hall and coach house to express the emphatic of their colour and facture.
- A Dutch windmill is the oldest building of the mansion and it is considered to be an exotic element of the park.
- On landlord Naryskinas initiative Zagare ensemble is unique with its variety of English styles. A landscape character park, cottages, neogotic buildings of the stud-farm and mansion-house of strict classical style were built here. It is not usual to find any combination of English architecture in other estates of Lithuania.



# Zagare Mansion Park formation and history

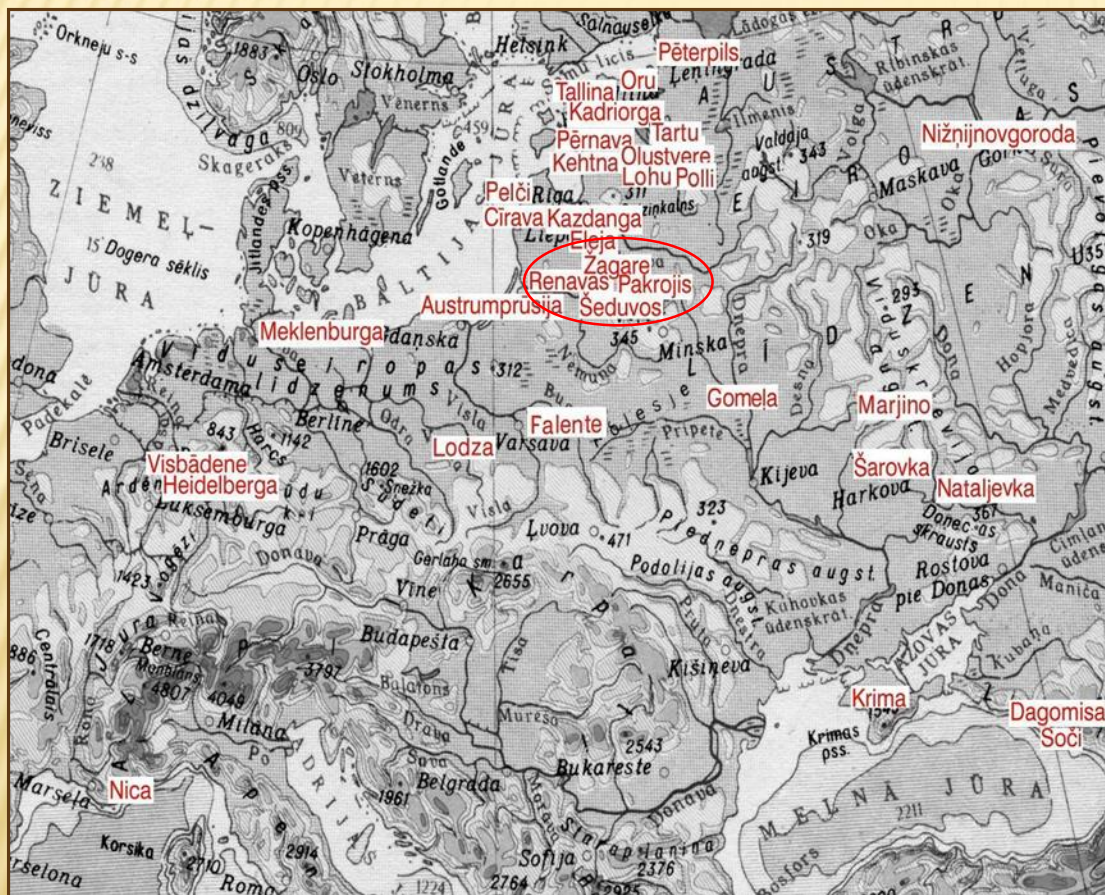
- Zagare Manor Park is a part of the manor and covers an area of about 70 hectares. Its territory used to be closed and it was surrounded with a high wooden fence with a stone socle.
- The mansion park consists of the old part and the new one. The old or the western part was founded around the manor house by Zubovas at the beginning of the 19th century.
- At the end of the 19th century the park was reconstructed and expanded according to the project of a famous dendrology specialist Georgas Frederichas Ferdinandas Kuphaldtas (1853-1938).
- This park specialist, who traveled throughout the Russian Empire in his youth and carefully studied the forests and parks of various climatic zones, got acquainted with the global experience and literature of dendrology, designed mostly natural parks.



1930 m. G. Naryškino dvaro rūmai su giminės herbu.



# Zagare Mansion Park formation and history



G. F. F. Kuphaldtas designed in Lithuania, besides Zagare in the following manor parks:

- *Raudondvaris park (Šeduva);*
- *Pakruojis park;*
- *Renavas park.*



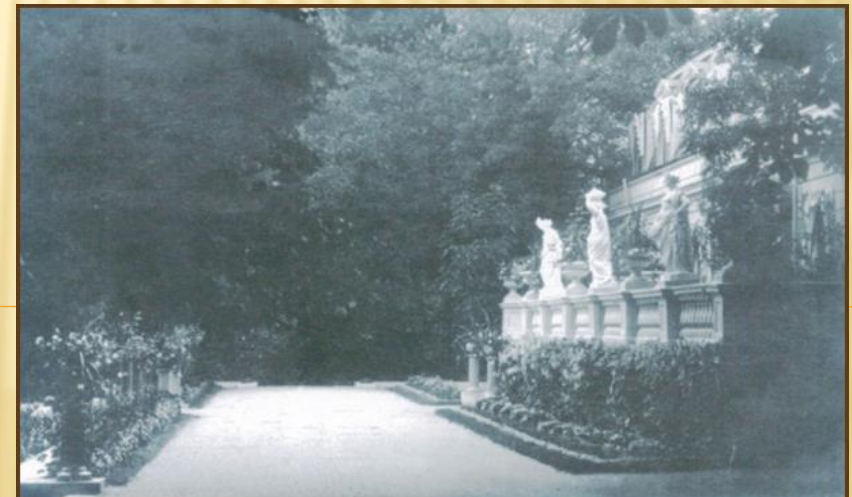


# Zagare Mansion Park formation and history

- A landscape architect and dendrology specialist, director of Riga parks and gardens G. F. F. Kuphaldtas has chosen unique species of flora and a perfect exposition of plants to Zagare Park. There were more than 200 species of plants implanted according to his project and more than 100 of them grow in Zagare park until nowadays.
- In the huge area of the park the same species of plants were ranged in different ways because it helps the greens to survive longer. A third of the plants were conifers.
- Most of the park trees both local and foreign ones were planted exactly according to the project in the former farmland.



G. Naryskinas manor house terrace, flower beds and fountain in 1905.



Terrace of G. Naryskinas manor house, decorated with sculptures in 1910.



# Zagare Mansion Park formation and history

- While speaking about the species of the trees in Zagare mansion park more than 200 European larches were planted in 4 groups on both sides of the road from Zagare to Joniskis and there were some of them planted in smaller groups and singly as well. There were also some white spruces and different kinds of pines planted in the park.
- Beech trees grow most beautifully in Zagare park and they seem to be the largest ones in Lithuanian parks.
- In the park grow interesting species and forms of lime trees (Tilia), maples (especially excellent silver maples), walnut trees, etc.
- Naryskinai left for England before World War I and their assignee looked after the mansion until about 1924. After World War I Zagare lost the trade importance and owners' attention so nobody took care of the park properly.



Horse-chestnut growing in front of the mansion house. 1973.

- In 1924 a part of Zagare park moved to the hands of town and it became a town park gradually. It has been open to everybody since then.



# Zagare Mansion Park formation and history



G. F. F. Kuphaldtas

- The project of Zagare Manor Park prepared by G. F. F. Kuphaldtas in 1898-1900 has not been discovered to this day.



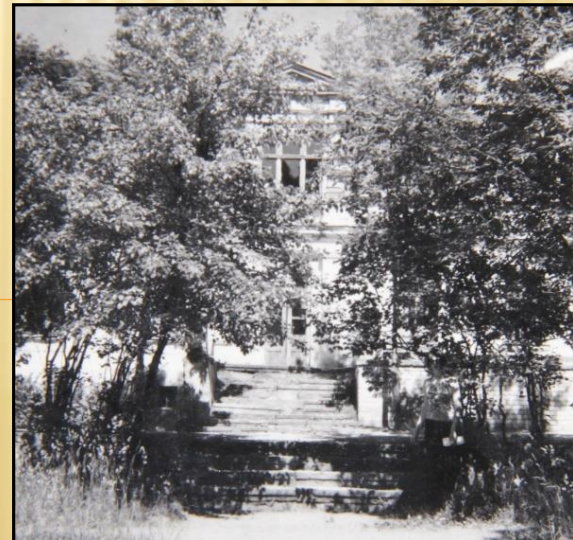
The plan of the territory of the New Zagare manor in 1921.





## DEVELOPMENT OF THE MANOR IN HISTORICAL PHOTOGRAPHY

Zagare manor house in 1973.





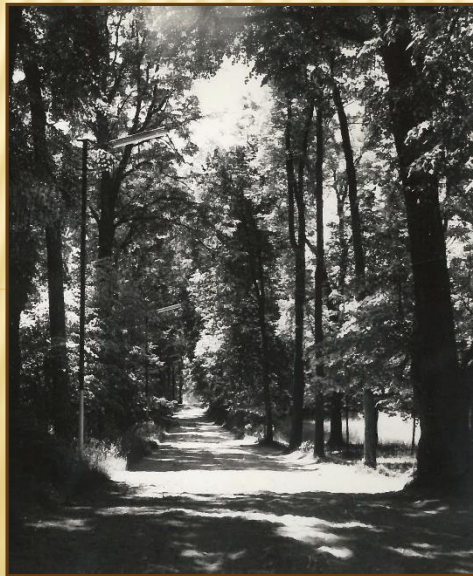


## DEVELOPMENT OF PARK SPACES IN HISTORICAL PHOTOGRAPHY.

An alley through the soldiers' graves leading to the stadium and hospital. 1973.



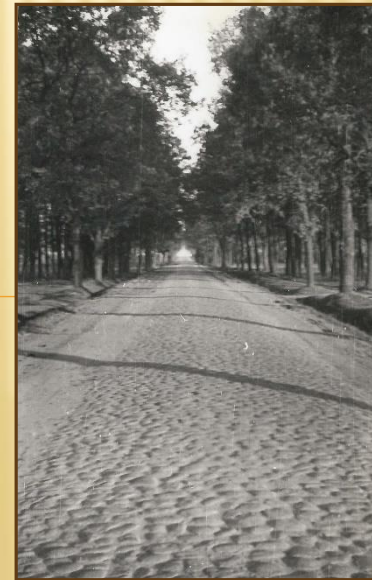
An alley leading to the mansion house from the main entrance. 1973.



An alley leading to the mansion house from the pond. 1973.



Road to Joniskis through the park. 1953.







## DEVELOPMENT OF PARK SPACES IN HISTORICAL PHOTOGRAPHY.

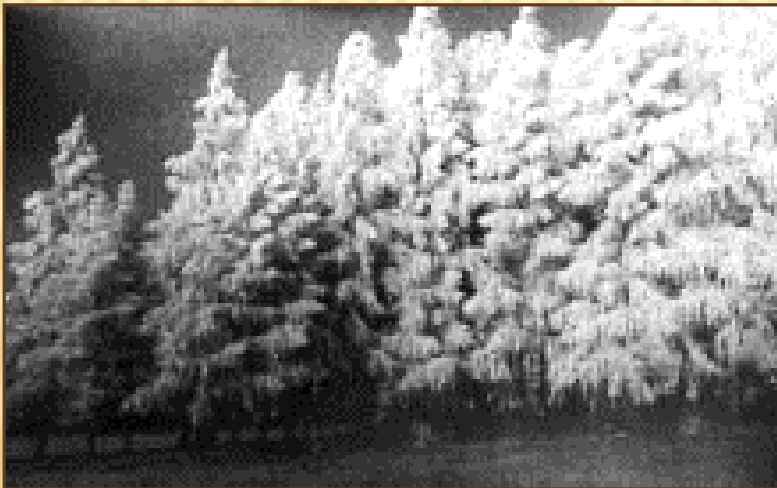
View from the river Svete 1930-1940.



Pond by the stables. 1930-1940.



1930-1940.



Road to the town through the park of G. Naryskinas. Poles with Vytis sign on both sides. 1938.





## DEVELOPMENT OF PARK SPACES IN HISTORICAL PHOTOGRAPHY.

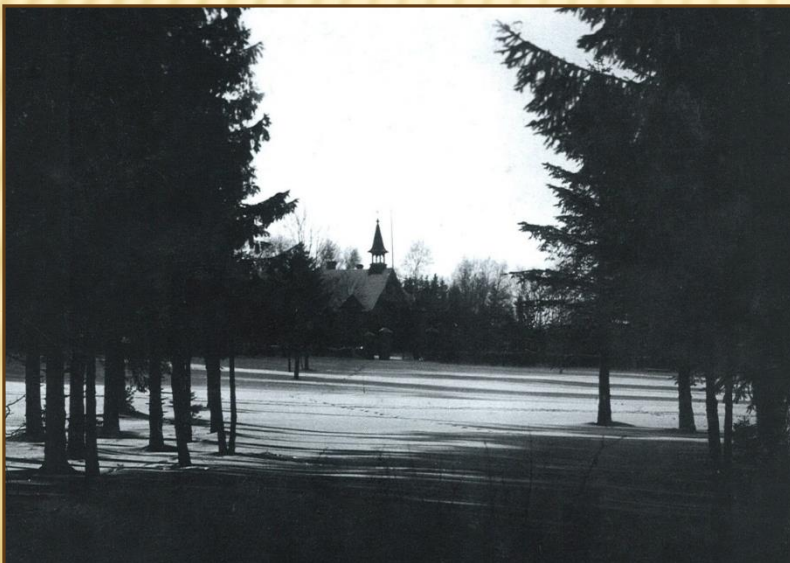
Riding hall. 1940.



Path of the park. 1940.



View of the park in winter. Primary school. 1937.



A group of birches in the park. 1940.







## ZAGARE MANOR PARK MANAGEMENT PROJECT

- The current condition of the park's trees and infrastructure is extremely poor, and the landscape park, which has been damaged by atmospheric effects, diseases and age, is rapidly disappearing.
- In 2013 the technical project for the management of Zagare Manor Park was prepared using various studies and information provided by specialists.









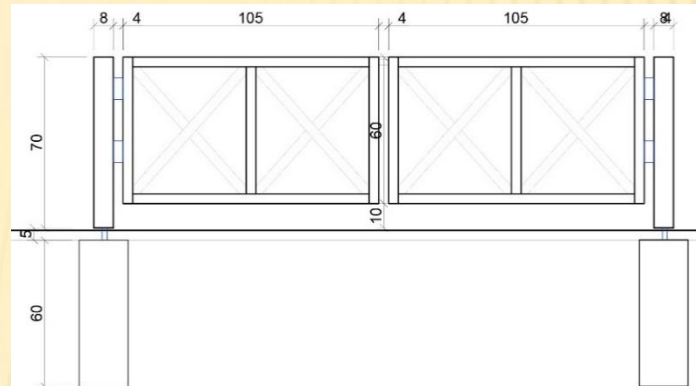


## ZAGARE MANOR PARK MANAGEMENT PROJECT DESIGN SOLUTIONS. SMALL ARCHITECTURE

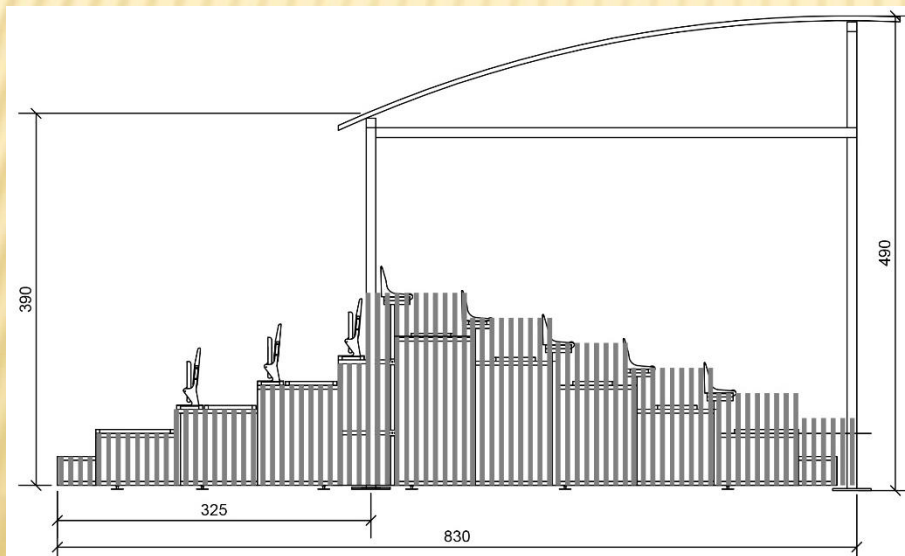
Bench. In the territory of the mansion house and near the school.



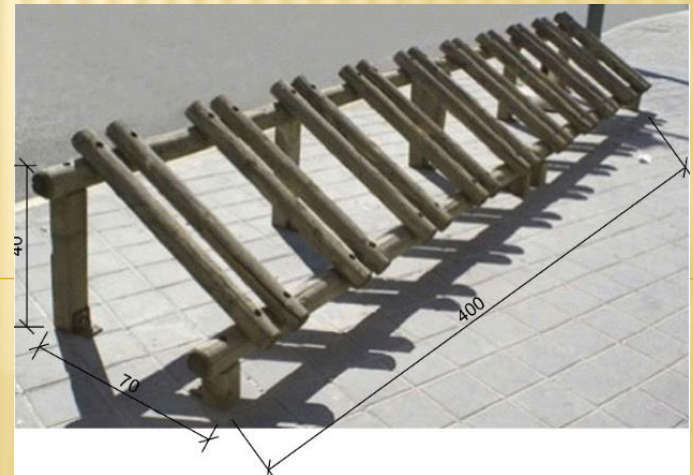
Garden gates.



Tribune.



Wooden bicycle rack.

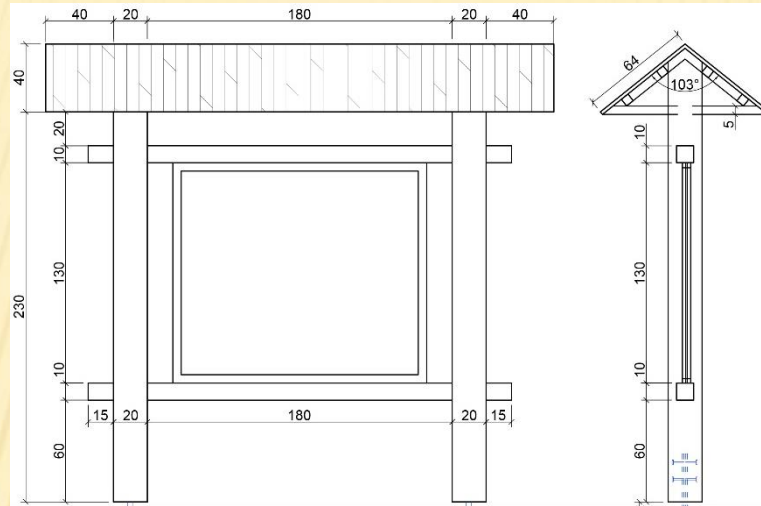




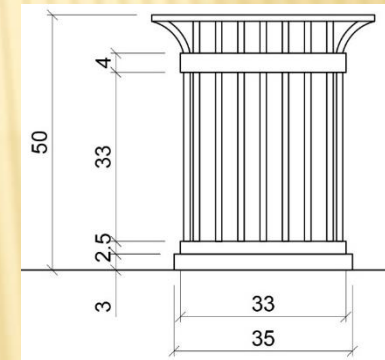
# ZAGARE MANOR PARK MANAGEMENT PROJECT DESIGN SOLUTIONS. SMALL ARCHITECTURE

Wooden information stand.

Wooden information stand.



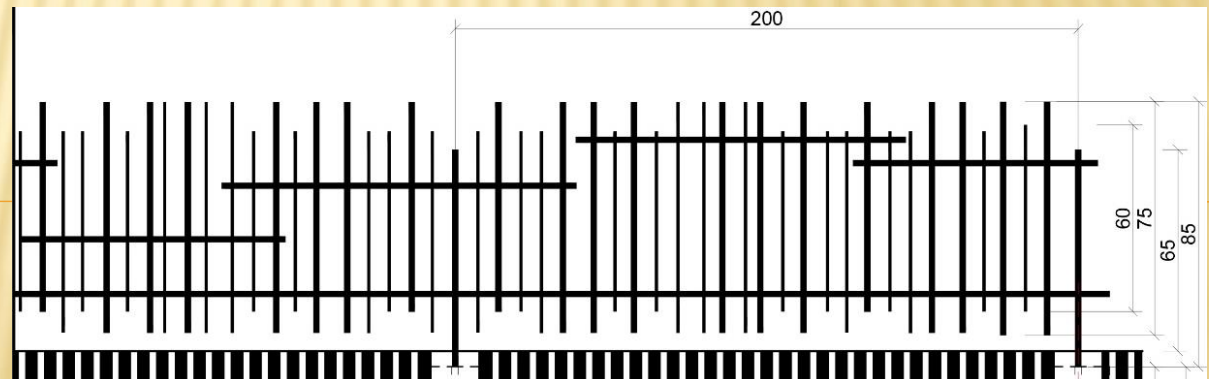
Recycle bin.



Bench around the tree.



Fence of Jewish cemetery.

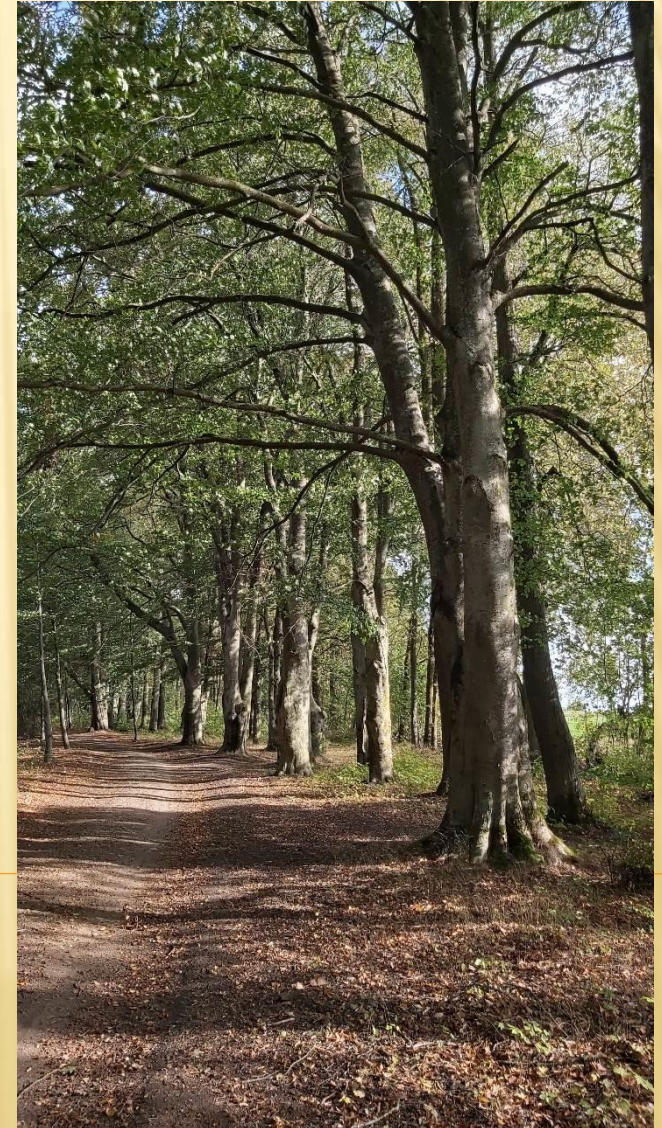






## ZAGARE MANOR PARK MANAGEMENT PROJECT

- The following park management works were provided in the Zagare manor park management project:
- *Restore these objects:* existing Maluno and Liepu str. historical paths, palace parterres, ponds, historical park fence, park entrance gate, boulder pavement, flower gardens near the mansion house, hippodrome, stream bed slopes, drainage systems, restore the network of paths.







## ZAGARE MANOR PARK MANAGEMENT PROJECT

- *Arrange the landscape:* the dendrological road and assortment is being restored and supplemented with new routes.
- *To create new architectural and functional elements of the park:* lighting, 3 car parks, bicycle path, children's playgrounds, picnic fields, event meadow, wild meadow.
- *Build new outdoor furniture, fittings, small architectural elements and play equipment:* information system, plant information stands and planes, 3 main types of benches, picnic tables with benches, flower beds, 2 children's playgrounds adapted to different children's ages for groups, pergolas, fences, WC stationary containers, etc.

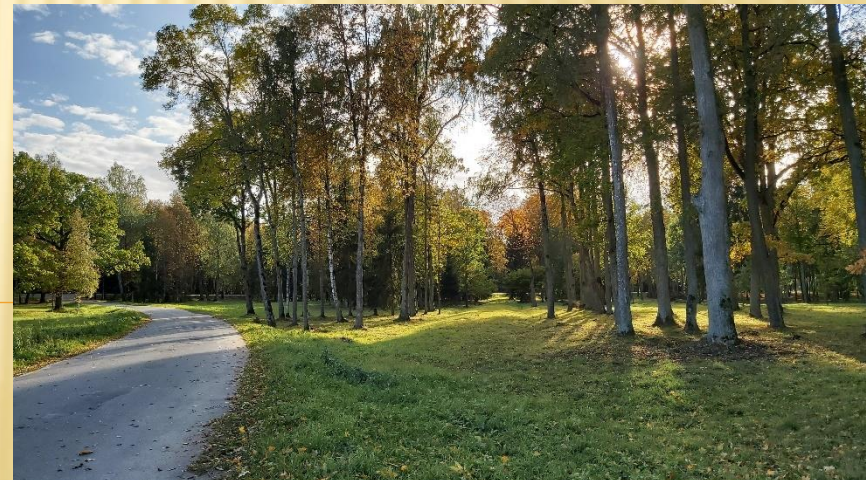






## ZAGARE MANOR PARK MANAGEMENT PROJECT

- *To create engineering infrastructure:* path lighting, decorative lighting, ponds system, trees and lawn irrigation system, summer water supply, sewage and drainage systems, event service electrical networks, camera system.
- At the moment not all the necessary amount is allocated for the implementation of the project. According to the planned funds, it is planned to arrange paths, drainage systems, plant new trees, install small architectural elements.







## ZAGARE MANOR PARK MANAGEMENT PROJECT

- The arrangement of greenery (removal of low-value trees and bushes, arborist works, planting of new greenery) was started in 2019.
- Currently public procurement procedures are underway for the arrangement of the infrastructure of Zagare Manor Park and the restoration of the historic brick fence and gate.



In 2019 arborist works were organised to remove low-value trees and bushes.



Zagare Mansion Park after arborist works.





## **ZAGARE MANOR PARK**

### **in the frame of LLI-444 NovelForHeritage project**

- The main Directorate of Zagare Regional Park (PP3) activity in the LLI-444 project - acquisition and installation of equipment for interactive indoor exposition on G. F. F. Kuphaldtas and Zagare Manor Park.
- Expectation of this open air workshop – prepared practical solutions/ideas/concepts of the students will be used for creation interactive indoor exposition and promotional goods.







Thank you ☺

