



Ilze Vītola

25/04/2017

Latvia



Area: 64589 km²

Forest: 44% of territory

Agricultural land: 38% of territory

Population: 2.16 millions

Capital City: Rīga (founded in 1201)





Kreis Recklinghausen (Vācija)	
Landsting Sörmland (Zviedrija)	
Powiat Wodzisławski (Polija)	
Jelgava local municipality (Latvija)	

Jelgava Local Municipality



About Jelgava Local Municipality

Jelgava Local municipality (novads) as administrative structure was established in 2009



JLM embraces 13 small rural municipalities – parishes. It is situated in the southern part of the country in Zemgale plain, borders with Republic of Lithuania. The total area of JLM is 1317 km²

JLM is situated only 42 km far from the Capital city of Latvia – Rīga

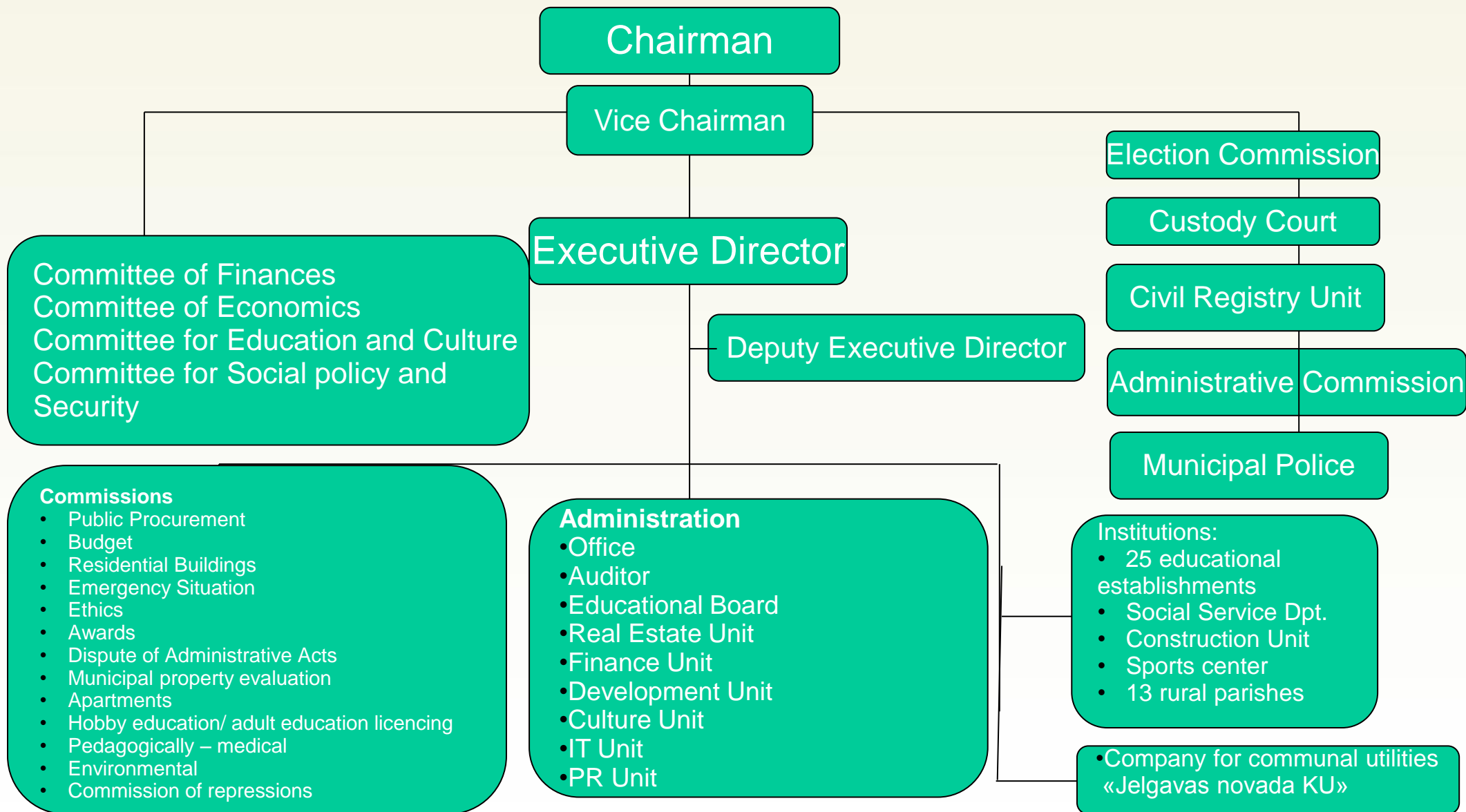
Number of inhabitants – 24496

The JLM is crossed by the second with water richest river – Lielupe – with its 20 tributaries

The JLM has noteworthy extraction places of peat, clay, dolomite and gravel

Unemployment level – 5.0%





Strategic goal and priorities of municipality

Jelgava Local Municipality – attractive environment for living and working

To improve and create environment for **family** (families who already live in municipality, new families with children, inhabitants at working age)

To improve and create environment for **entrepreneurship** (businesses already operating in municipality, newly established businesses, businesses who want to change their operating place)

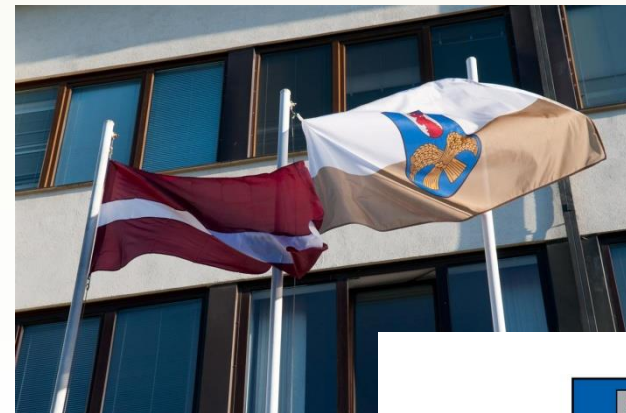
To improve and create environment for **recreation and inspiration** (inhabitants, guests or tourists, people crossing the municipality)

Priorities: education, public utilities, place attractiveness as criterion for inhabitants' life quality

Identity of JLM

In 2011 flag and logo with slogan «Jelgava Local Municipality – For a Sustainable Future!» elaborated for JLM

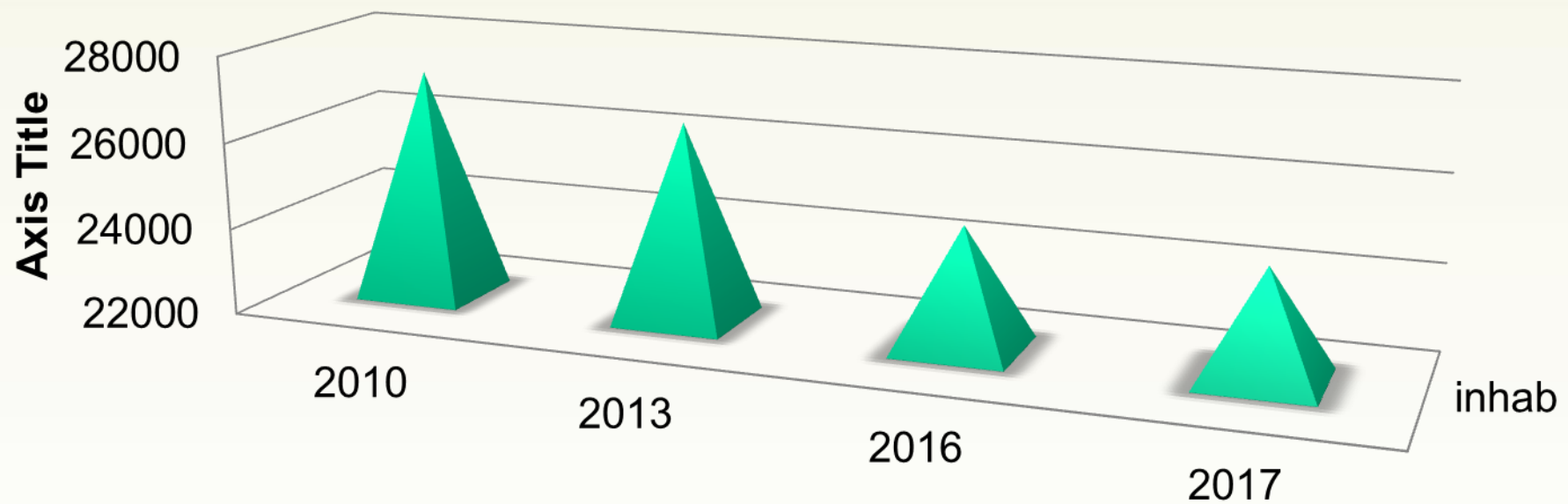
JLM logo embraces 3 color squares directed toward perspective: golden color symbolizes our working habits and strong families; blue – river Lielupe with its tributaries that crosses JLM, and green – traditional agriculture




Sails – mark of the borders and facilitator of sense of belongingness

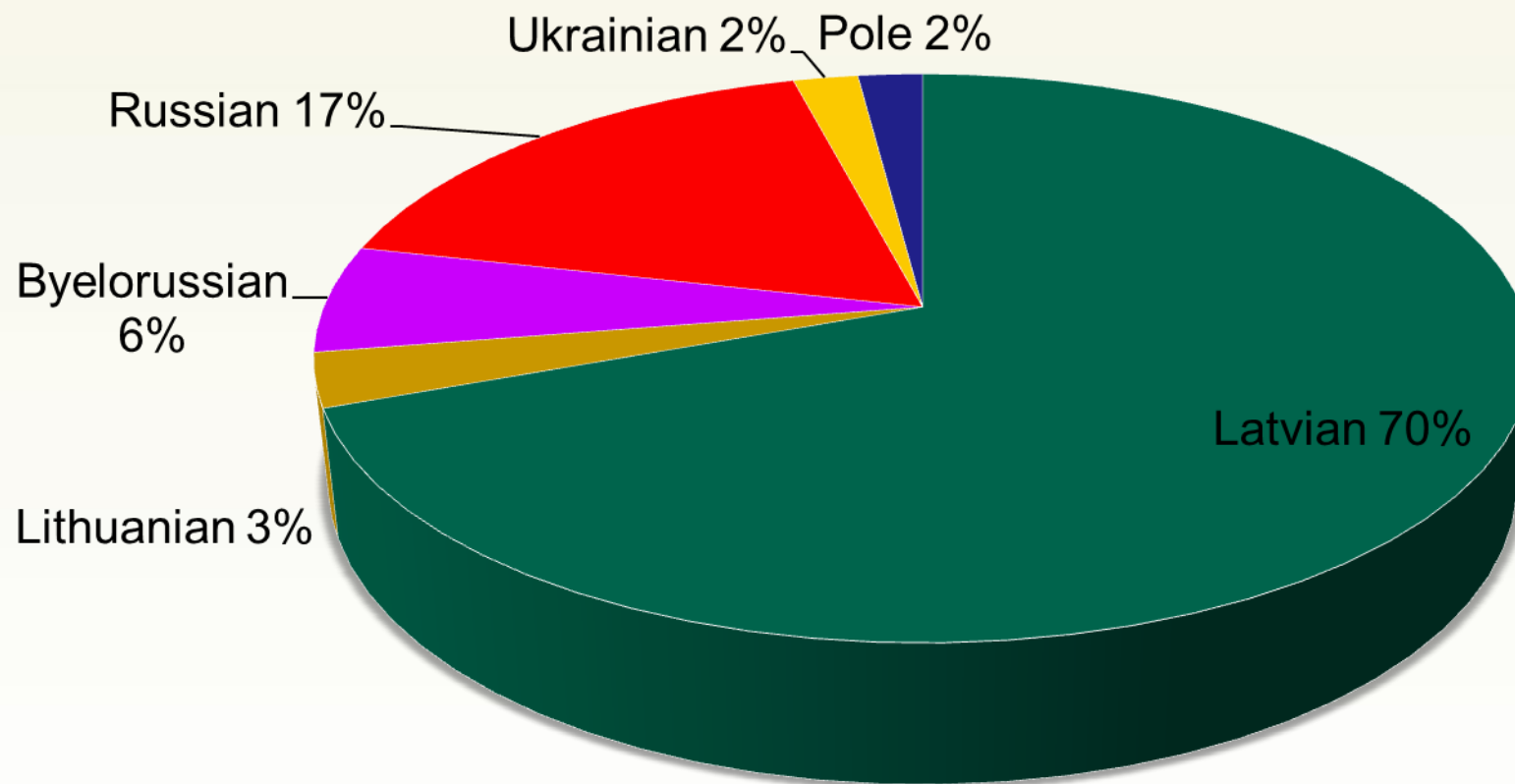


Inhabitants



	2010	2013	2016	2017
 inhab	27288	26557	24775	24496

Inhabitans 01.01.2017



Work with EU funds

During 2009 – 2017 JLM has implemented 499 projects with the total amount of 38,4 million EUR (including ERDF, ESF, Cohesion Fund, territorial cooperation programmes (Baltic Sea Region, Latvia-Lithuania), EAFRD, EAGGF, Climate Change Financial instrument, EC programmes – Europe for Citizens, Youth in Action etc.)



History

Families of Dukes of Courland and German Barons have lived in the surroundings of Jelgava. They have left impressive manor complexes and beautiful parks from 17th – 19th centuries as the testimonies for the future generations

A day long excursion can be arranged to tour around Manors of JLM – Vircava, Blankenfelde, Lielplatone, Zaļā, Bērvircava etc. and to get to know the history of their former owners: Barons Hahn, Manteuffel, Medem, Klopmann, Rekke and other families



Clean environment, nature, air



Meadows and fields outside the city are places for fantastic relaxation and pleasure

Most of the territory – 60% – is occupied by agricultural land belonging to the most fertile land in Latvia, and forests, covering 26% of the territory

Bird watching



Wide fields and meadows are favorable homeplaces for birds. Each spring and autumn one can observe thousands of geese, swans and cranes. Water birds spend the nights in the flooded meadows, geese and cranes – in swamps. Their activities take place in the open and bald territories

Agricultural values



In the crop growing the basic directions are cultivation of grain and rape, in cattle breeding – manufacture of milk and meat. Almost the half of all the grain and rape harvest in Latvia is produced in JLM

Realised 499 projects

38'643'473 Eur

During the period 1560 Eur / inhabitant

Entrepreneurship



Apart of traditional crop growing and dairy farming also green energy production is becoming more popular between local farmers as the branch of entrepreneurship;

Biggest enterprises are involved in peat extraction, road construction and cobblestone or paving stone production







International cooperation

More than 50 cooperation partners from Italy, France, UK, Finland, Germany, Sweden, Norway, Romania, Moldova, Poland, Lithuania, Latvia

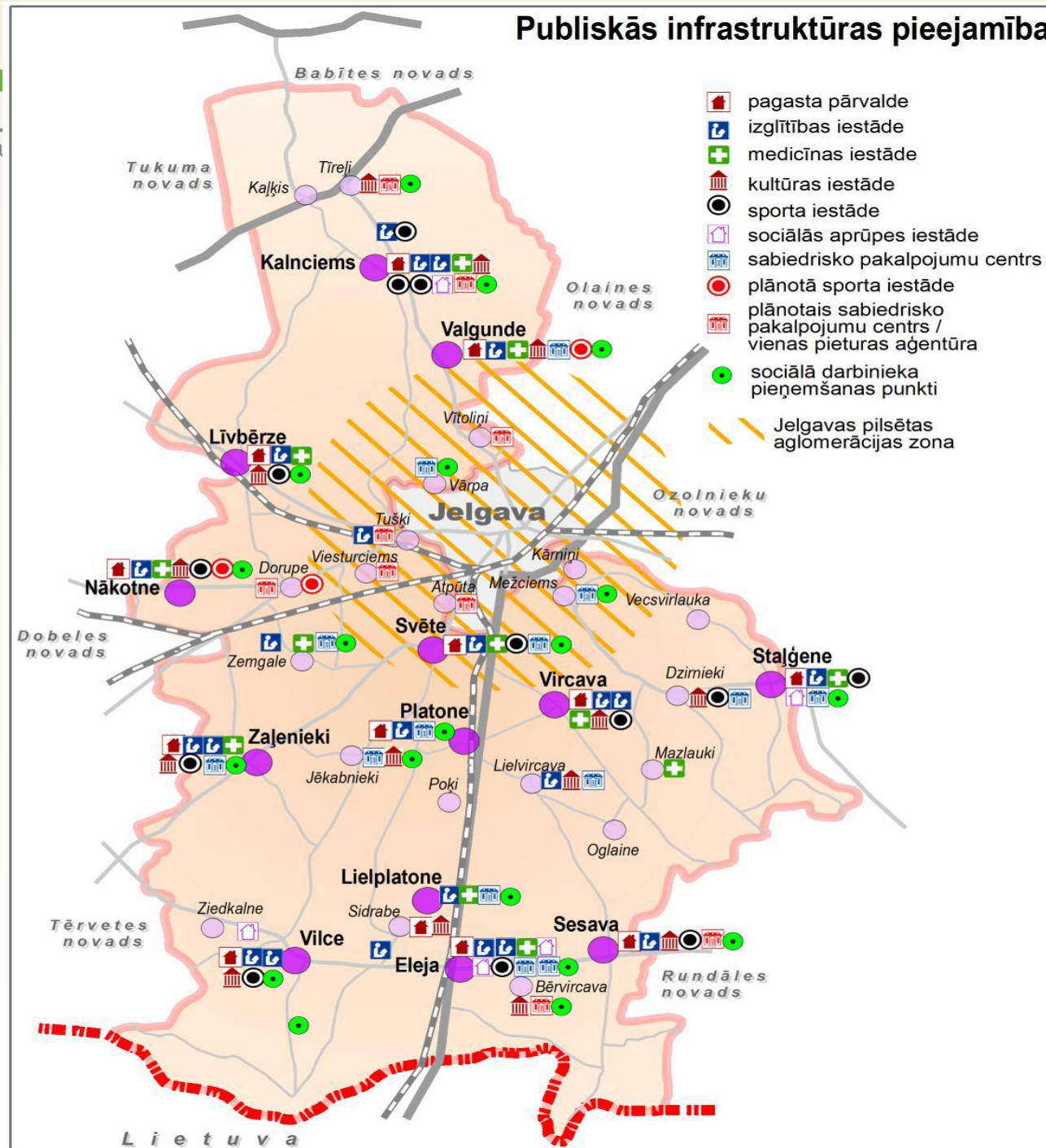


Social sphere

- Organization of receiving of social services and assistance
- Improvement of family support system, including children right protection
- Promotion of public health
- Promotion of employment, including social entrepreneurship
- Coordination of society integration



Publiskās infrastruktūras pieejamība



Social Services in JLM

- Assistance service for disabled people
- Educational groups for parents and persons with low social skills
- Support groups for families
- Rehabilitation for children and adults suffered from violence
- Rehabilitation for perpetrators
- Long-term care services for the elderly and orphans
- Support for foster families through seminars - workshops and consultative support
- Crisis center service for families in crisis
- Care-at-home service
- Motivation for rehabilitation service for addicted people

Social Services in JLM

- Counselling of co-addicted persons
- Social work with families with children
- Service of Psychologist
- Technical Aids service
- Benefits for inhabitants at social exclusion and poverty risk
- Advisory support of social worker for the elderly and disabled

Due to the fact that there are no refugees so far in JLM,
there are no services for refugees developed

Present for new-borns



NGO

- Education, culture and art area
- Youth area
- Social area
- Civil society
- Sport, free time, auto, moto area
- Historical and nature protection area
- Advocacy and profesional protection area
- Minority area
- Hunters area
- Rezidental housing management area
- Religious area

You can

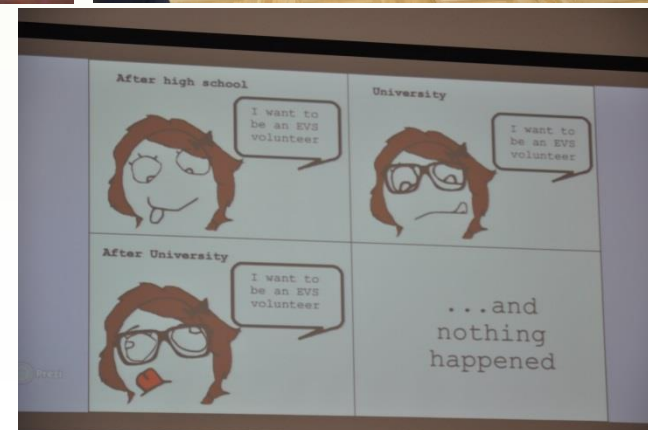
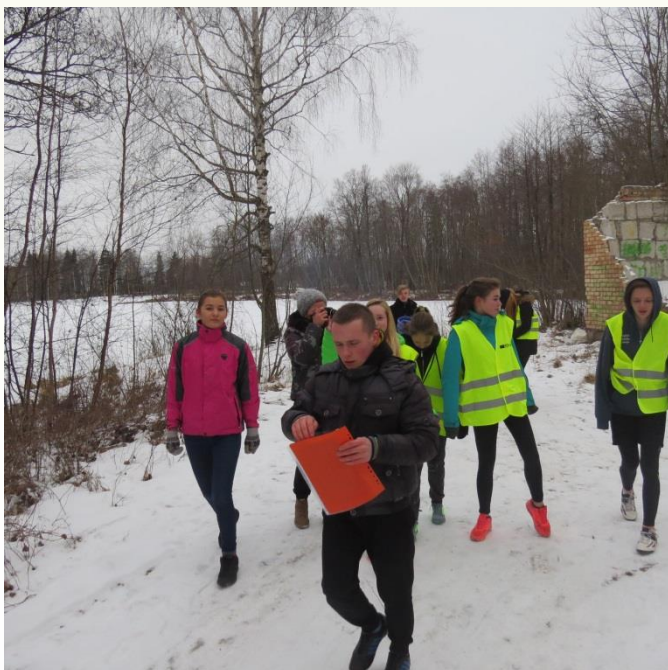
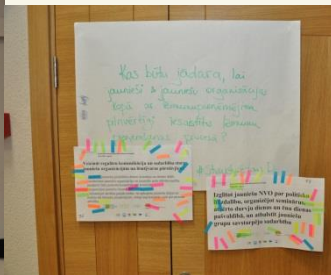
- Culture activities
- Day activities centers
- Sports activities
- Education of interests
- Library
- Traveling
- All other possibilities

Senior activities





Youth activities



Day activities center



Awards for entrepreneurs and well kept properties



Festival of Jelgava Local Municipality



Highest awards of municipality







Welcome to Jelgava local municipality!

Contacts:

Jelgava Local Municipality

Pasta street 37, Jelgava, Latvia, LV 3001

www.jelgavasnovads.lv



Vice chairman

Ilze Vitola

Ilze.vitola@jelgavasnovads.lv

+371 29158552