



# **Nature management for the improvement of biodiversity status in manor parks. Project LLI-476 "Save past for the future".**

Improvement of the environmental  
conditions of the public water bodies in  
Latvia and Lithuania

Foundation for Peatlands Restoration and Conservation

dr. Leonas JARAŠIUS  
dr. Jūratė SENDŽIKAITĖ  
Nerijus ZABLECKIS  
Žydrūnas SINKEVIČIUS

*Joint conference*

*A story of interaction of nature, cultural heritage, and tourism in the manor parks*

# Project PARTNERS

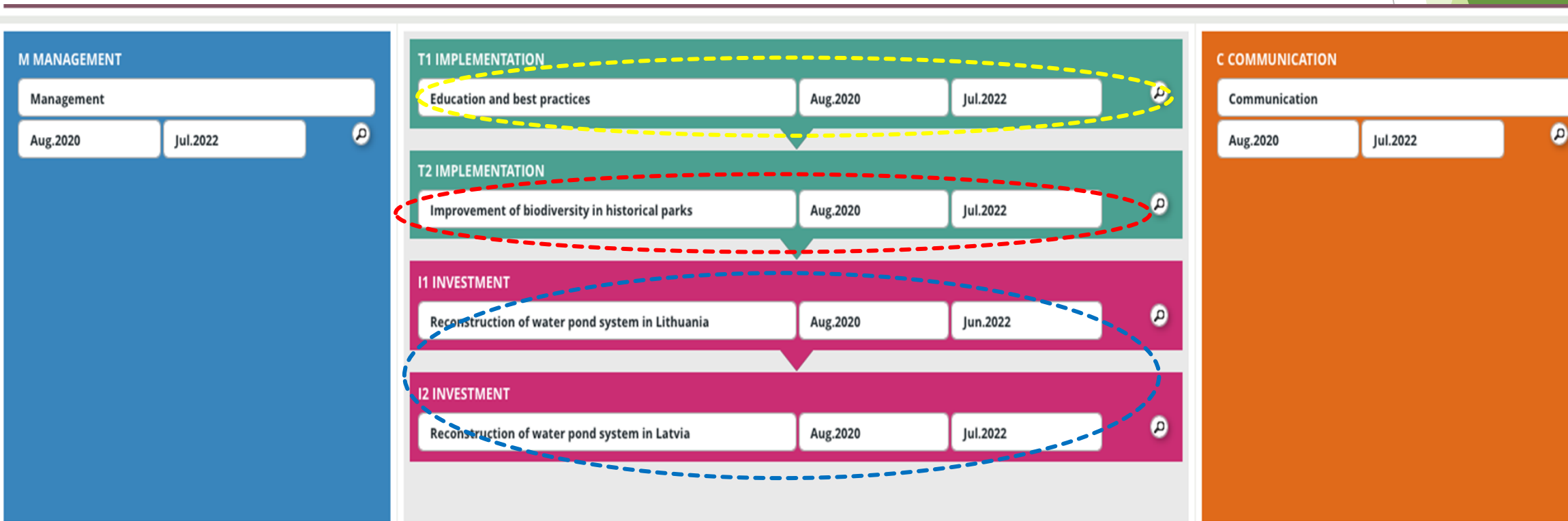


LP - Preili County Municipality (LV)

PP2 -Innovators valley / Viešoji įstaiga “Inovatorių slėnis” (LT)

PP3 - Foundation for Peatland Restoration and Conservation/ VšĮ "Pelkių atkūrimo ir apsaugos fondas" (LT)

PP4 - Zarasai District Municipality / Zarasų rajono savivaldybė (LT)





Projects sites

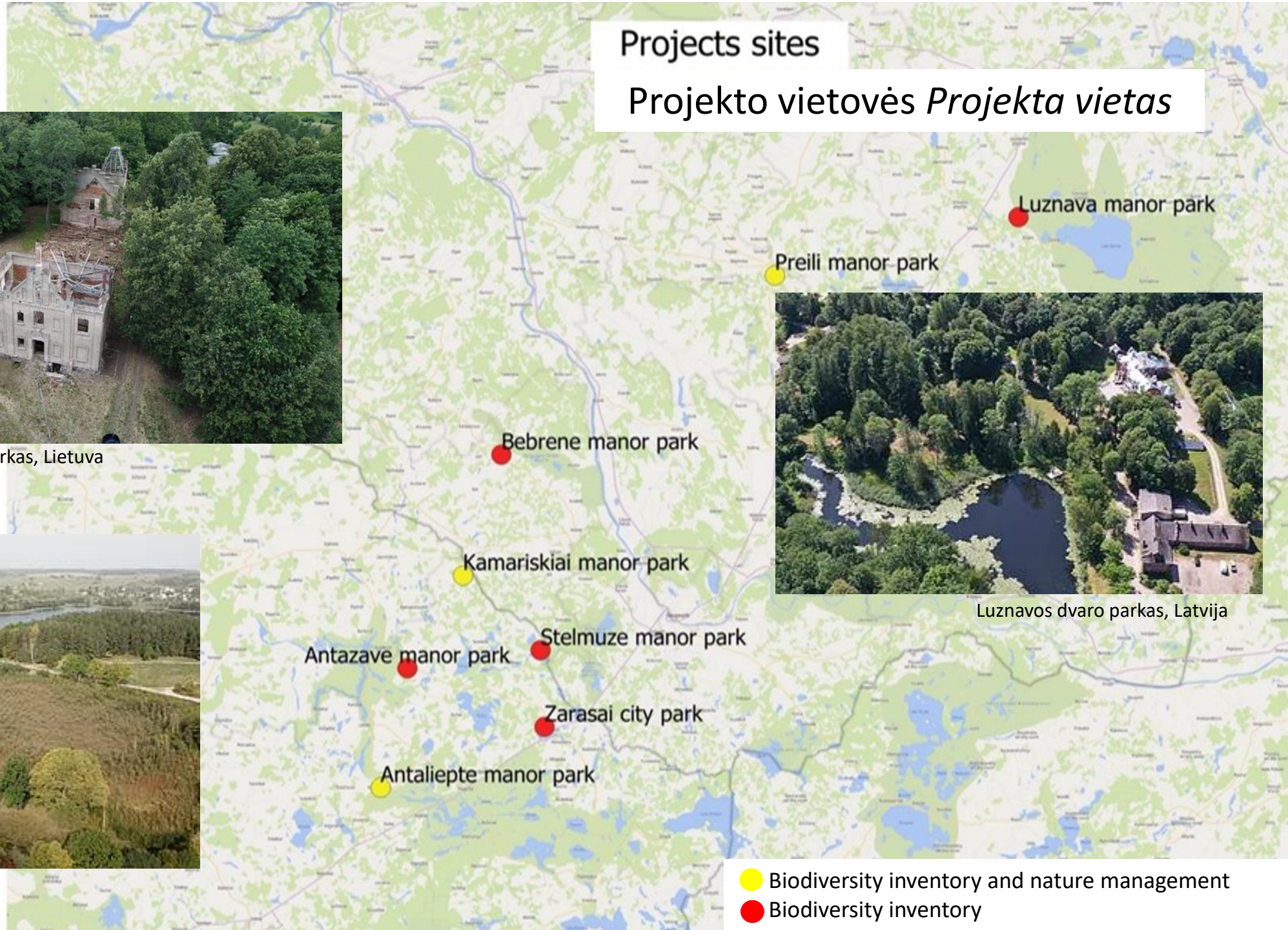
Projekto vietovės *Projekta vietas*



Kamariškių dvaro parkas, Lietuva



Zaraso Didžiosios salos parkas, Lietuva



Luznavos dvaro parkas, Latvija

- Biodiversity inventory and nature management
- Biodiversity inventory



# Contribution of Foundation for Peatlands Restoration and Conservation

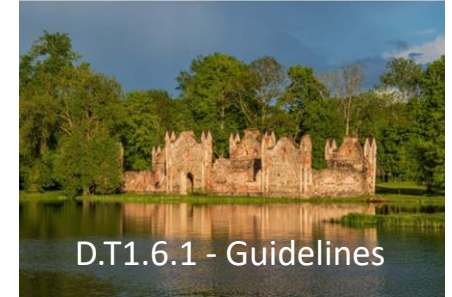
- **T1 Education and best practices**
  - D.T1.6.1 - Guidelines for advanced management of historical parks
  - D.T1.7.1 - Field days
- **T2 Improvement of biodiversity in historical parks**
  - D.T2.1.1 - Reports on biodiversity inventories for 8 parks
  - D.T2.1.2 - Management proposals on greeneries and trees for Antaliepte and Kamariskiai
  - D.T2.1.3 - Recommendations for improving the conditions for biodiversity
  - D.T2.1.7 - Meetings with the owners of the park
  - D.T2.2.1 - Report on Economic assessment of ecosystem services in historic parks
  - D.T2.3.1 - Reports of managed trees
  - D.T2.4.2 - Lists of actions with pictures (working camps)
- **I1 , I2 Reconstruction of water pond system in Lithuania and Latvia**
  - Expert consultation and supervision for pond installation
- **C Communication**
  - Short video movie, publications on websites, participation in the conferences

ISTORINIŲ PARKŲ PRIEŽIŪROS  
VADOVAS

biologinei įvairovei išsaugoti

VĖSTURISKO PARKŲ APSAIMNIEKOŠANAS  
ROKASGRAMATA

biologiskās daudzveidības saglabāšanai



D.T1.6.1 - Guidelines



D.T1.7.1 - Field days



Tree management



Working camps



Meeting with park owners

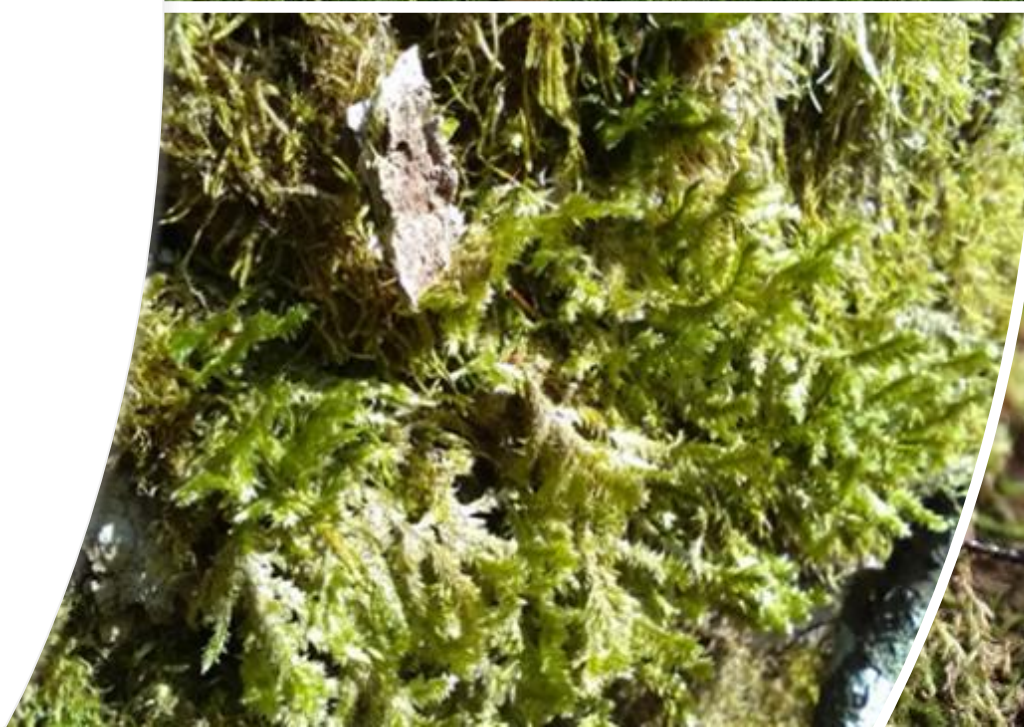


Water pond reconstruction



# Inventory of biodiversity

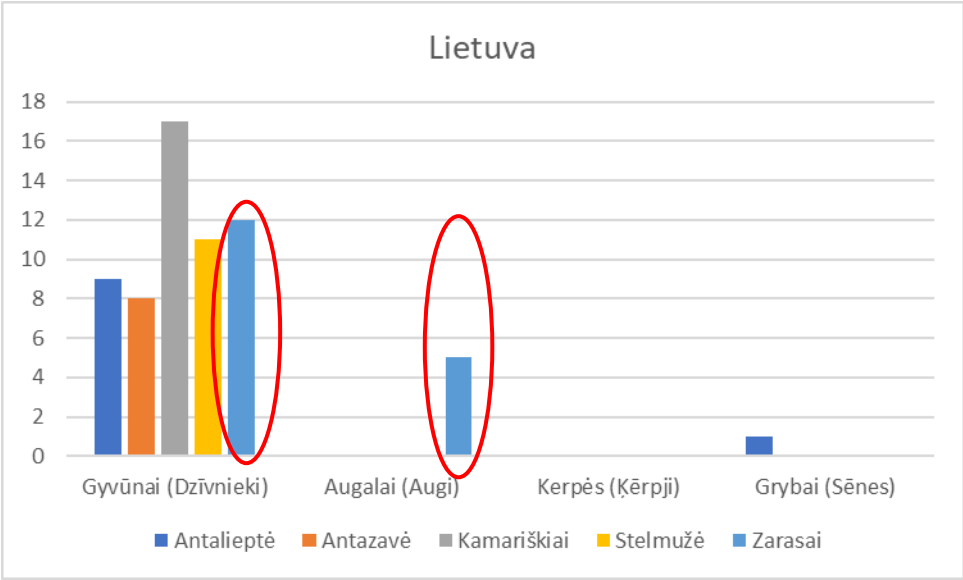
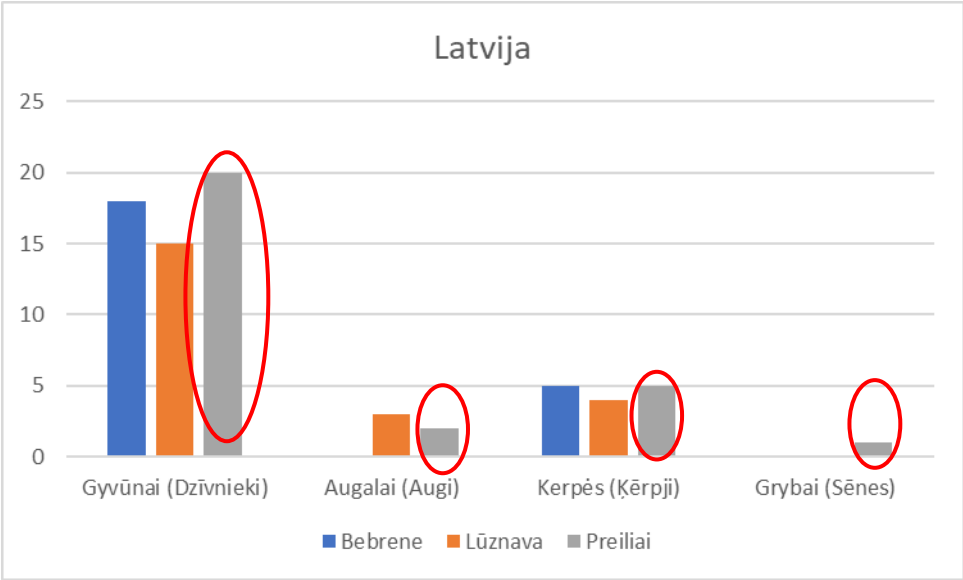
- For the biodiversity researches in manor parks the following indicative species and objects were investigated:
- Invertebrates (insects, molluscs, etc.)
- Ampibians
- Birds
- Bats
- Lichens
- Mosses
- Vascular plants
- Habitats of European importance
- Trees valuable for biodiversity





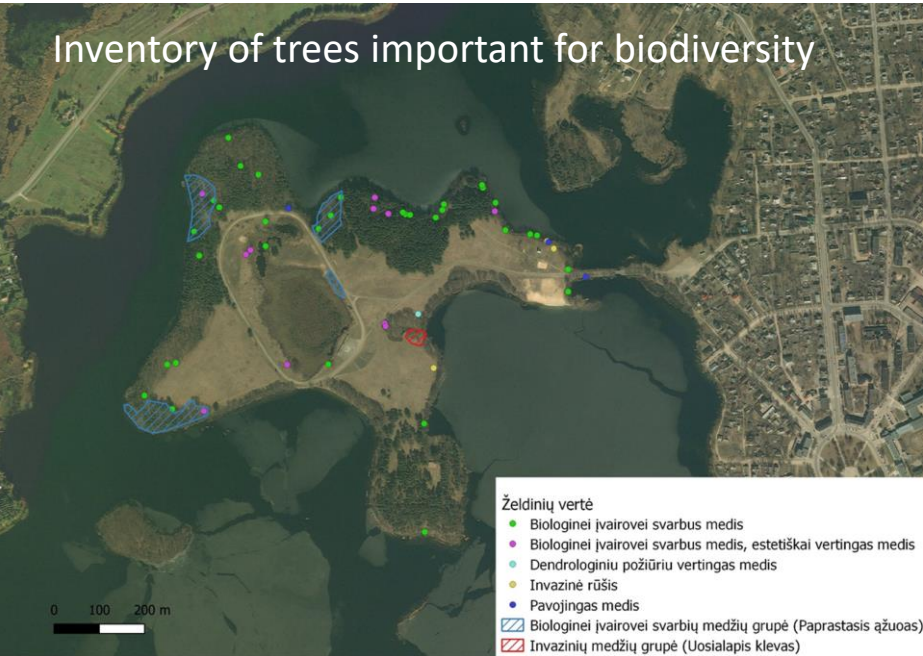


# Protected species in Latvian and Lithuanian project sites

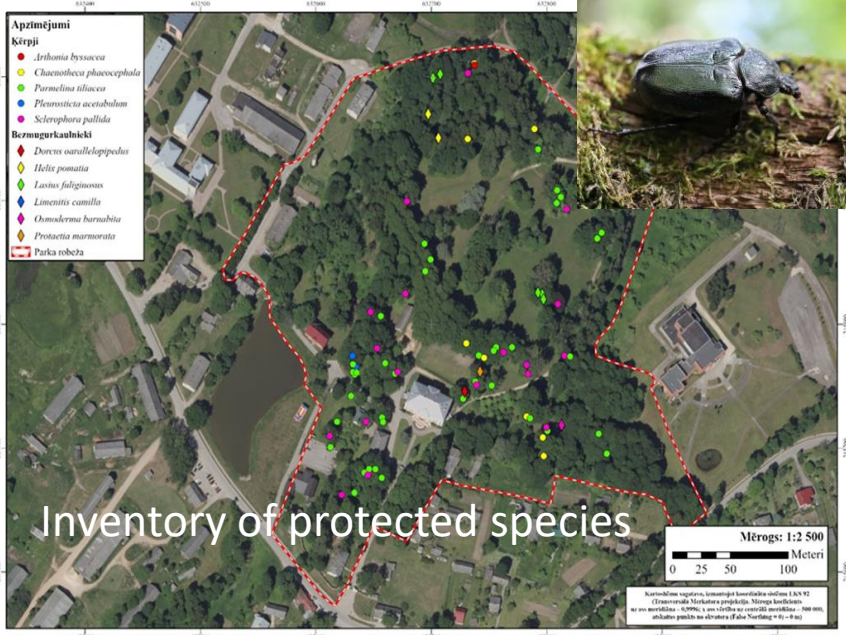
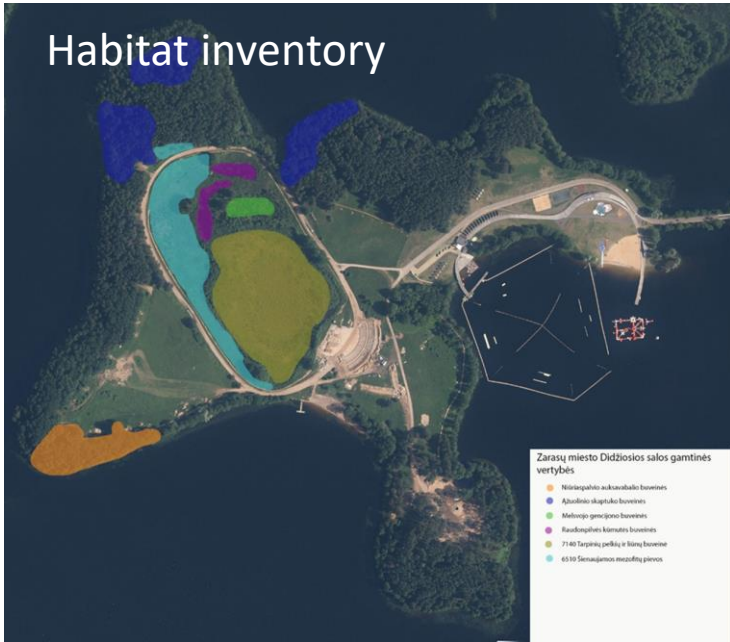




Inventory of trees important for biodiversity



Habitat inventory



Recommendations for park owners

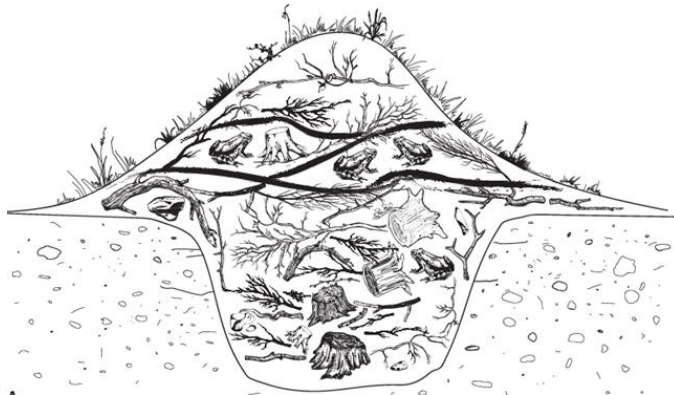
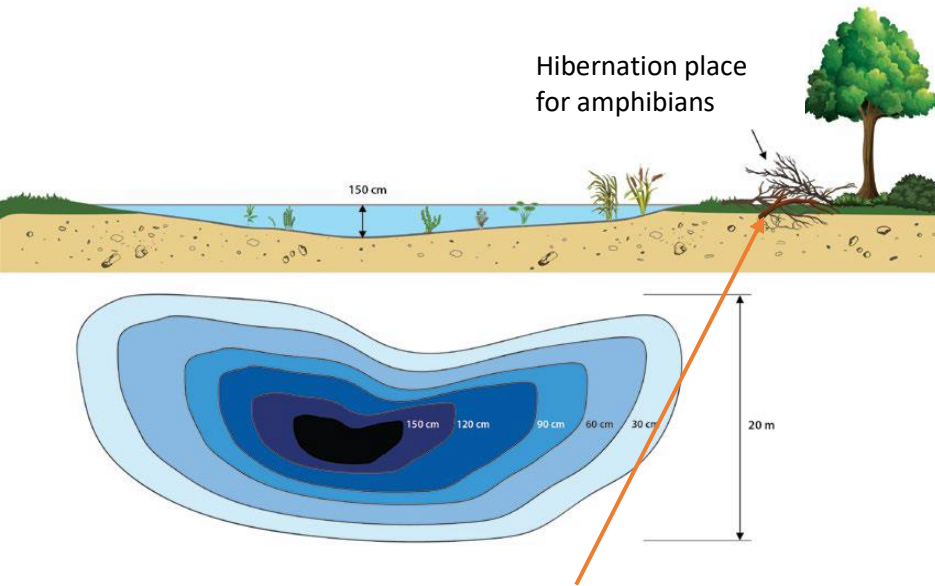
Creation of schemes for park management priority zones



Rekomendacijos parkų biologinės įvairovės būklės pagerinimui;  
*Ieteikumi biologiskās daudzveidības stāvokļa uzlabošanai parkos*



# Reconstruction and restoration of water ponds





## Reconstruction and restoration of water ponds



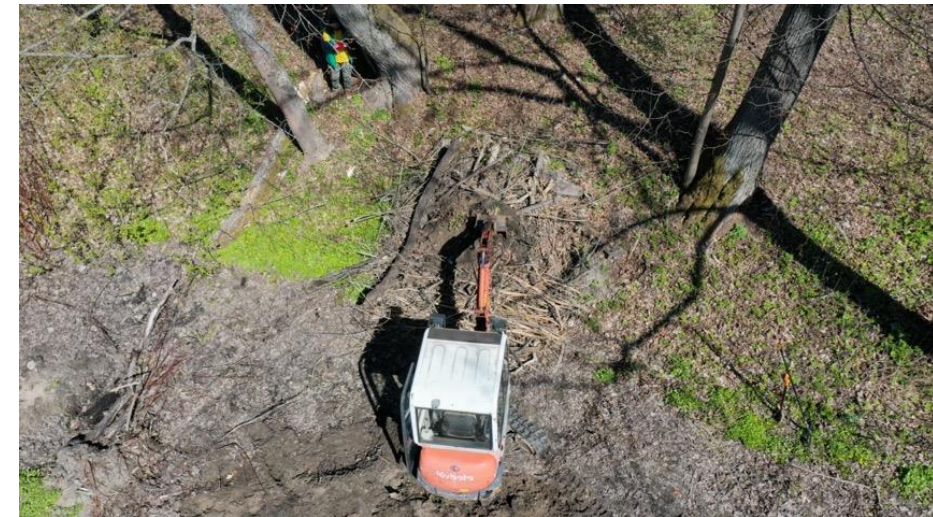
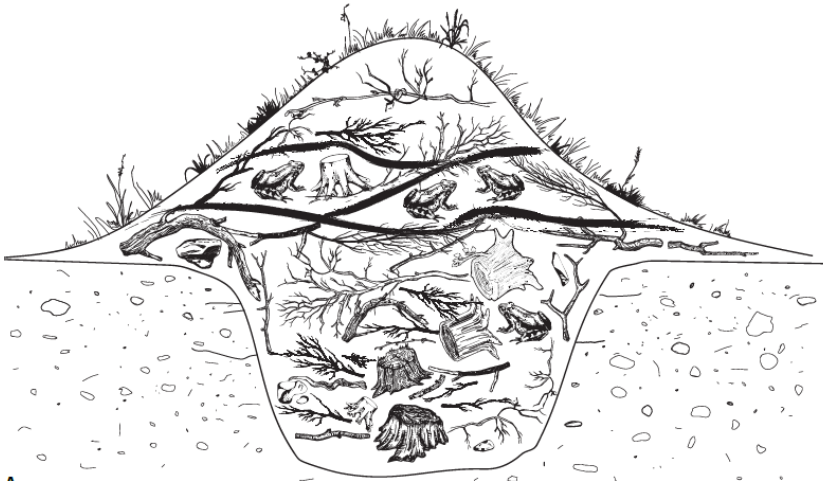
Before



After



Improving the biodiversity status: creation of hibernation (wintering) places for amphibians

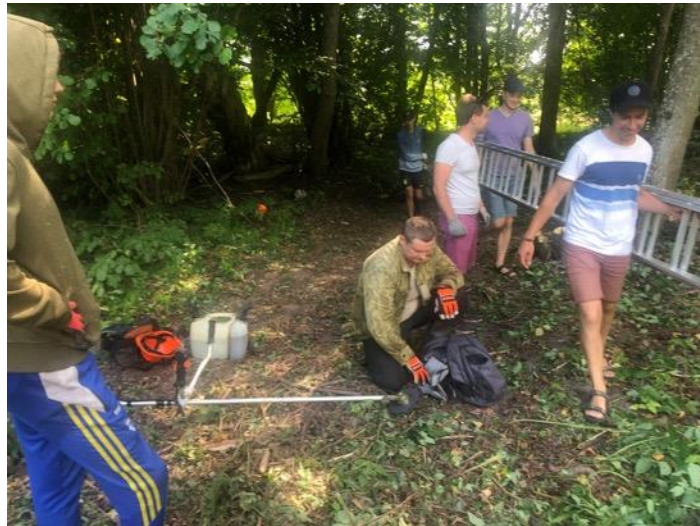




# Working camps

## 4 working camps organized, which included:

- Creation of artificial habitats (nesting boxes for birds and bats, hibernation places for amphibians, insect hotels, etc);
- Management of Hermit beetle (protected on the EU scale) habitats;
- Bush clearing near the amphibian ponds and other valuable habitats (meadows);
- Tree pruning;





# Tree management

- After the inventory of trees which are important for biodiversity and consultation with specialists, 37 trees were managed in Antalieptė (20), Kamariškiai (14) and Bebreinė (additional 3);
- The measures applied: reduction of tree crown (cutting the dead branches, etc.) and tidying the tree crown;
- Notice, that some trees despite their age do not need any help. This is particularly important in the zones of environmental priority. Therefore, the only recommendation: to leave as much of old trees and dead timber as possible.





## ISTORINIŲ PARKŲ PRIEŽIŪROS VADOVAS

biologinei įvairovei išsaugoti

## VĖSTURISKO PARKU APSAIMNIEKOŠANAS ROKASGRĀMATA

bioloģiskās daudzveidības saglabāšanai



# Publication: Guidelines for advanced management of historical parks

## TURINYS

ĮVADAS	4
Terminai ir sąvokos	6
1. Biologinė įvairovė ir kraštovaizdžio elementai istoriniuose parkuose	10
2. Parkų tvarkymas ir priežiūra	
2.1. Parkų tvarkymo zonų išskyrimas	14
2.2. Parkų tvarkymo ir priežiūros planavimas	17
3. Metodinės priemonės biologinei įvairovei išsaugoti parkuose	
3.1. Medžių senolių priežiūra	23
3.2. Negyvos medienos tvarkymas	29
3.3. Pievų priežiūra	33
3.4. Vandens telkinių įrengimas ir atkūrimas	39
3.4.1. Varliagyviams skirtų vandens telkinių įrengimas	40
3.4.2. Fitoremediacinių šlapynių įrengimas	44
3.5. Invazinių augalų rūšių prevencija, kontrolė ir naikinimas	46
4. Kitos priemonės biologinei įvairovei palaikyti	
4.1. Žiemaviečių ir slėptuvių varliagyviams įrengimas	50
4.2. Migruojančių varliagyvių apsauga	52
4.3. Inkilai paukščiams	54
4.4. Inkilai šikšnosparniams	56
4.5. Daugiafunkciai inkilai	58
4.6. Vabzdžių viešbučiai	60
5. Istorinių dvarų parkų ekosisteminės paslaugos	61
APIBENDRINIMAS	62
SUMMARY	64
REKOMENDUOJAMA LITERATŪRA	66
NAUDINGOS NUORODOS	68
PRIEDAI	69

## SATURS

IEVADS	4
Īss terminu skaidrojums	6
1. Bioloģiskā daudzveidība un ainavas elementi vēsturiskajos parkos	10
2. Parku apsaimniekošana un uzturēšan	
2.1. Parku apsaimniekošanas zonu noteikšana	14
2.2. Parku apsaimniekošanas un uzturēšanas plānošana	17
3. Metodiskie pasākumi bioloģiskās daudzveidības saglabāšanai parkos	
3.1. Veco koku kopšana	23
3.2. Atmirušās koksnes saglabāšana	29
3.3. Pļavu kopšana	33
3.4. Ūdenstilpju atjaunošana un ierīkošana	39
3.4.1. Ūdenstilpju ierīkošana abiniekiem	40
3.4.2. Fitoremediācijas mitrāju ierīkošana	44
3.5. Invazīvo augu sugu profilakse, kontrole un iznīcināšana	46
4. Citi bioloģiskās daudzveidības atbalsta pasākumi	
4.1. Abinieku ziemošanas vietu un slēptuvju ierīkošana	50
4.2. Abinieku aizsardzība migrācijas laikā	52
4.3. Putnu būri	54
4.4. Sikspārņu būri	56
4.5. Daudzfunkcionālie būri	58
4.6. Kukaiņu viesnīcas	60
5. Vēsturisko muižu parku sniegtie ekosistēmas pakalpojumi	61
KOPSAVILKUMS	62
SUMMARY	64
IETEICAMĀ LITERATŪRA	66
VĒRTĪGAS NORĀDES	68
PIELIKUMI	69

The publication will be available in website:

[www.pelkiufondas.lt](http://www.pelkiufondas.lt)



# The main recommendations

- Set up the management priority zones;
- In the zone of environmental priority we should focus on extensive maintenance of meadow habitats and leaving as much of old trees and dead timber as possible;
- Before the maintenance of old (veteran) trees it is recommended to consult with the specialists (arborists and dendrologists);
- Public awareness about the importance of old and dead trees helps to avoid the conflict with local communities (mark with special sign, etc.);
- Creation of artificial habitats not only for birds but for other animals as well (nesting boxes for wood peckers owls, bats; hibernation places for amphibians, insect hotels, etc.);
- For more recommendations, visit website [www.pelkiufondas.it](http://www.pelkiufondas.it). The guidelines up coming soon.



# Examples. Meadow maintenance in Latvian parks

Formation of educational „stripes“ in meadows of Bebrene manor park



Example of correct way to maintain meadow and Informational board about the nature values in Preili park



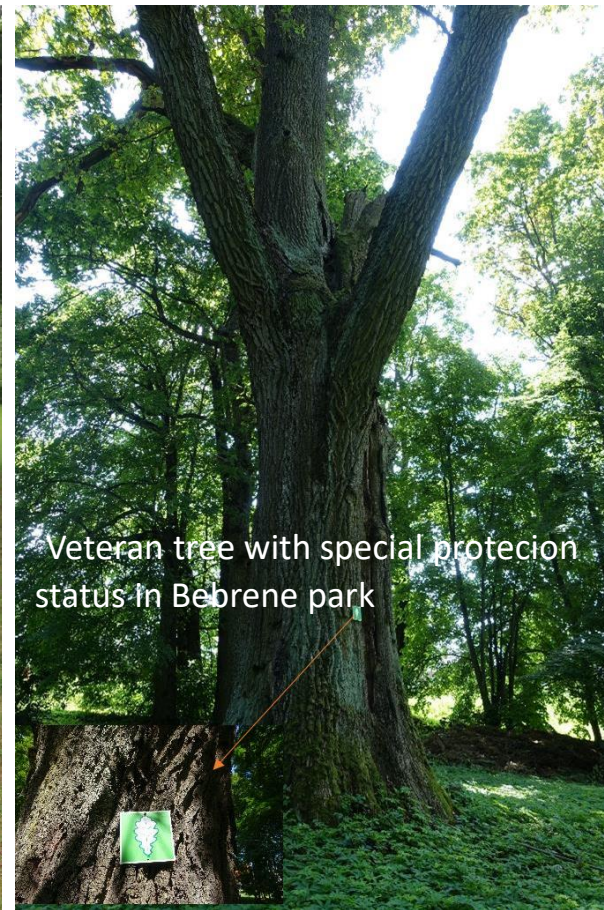
# Examples. Public awareness about the importance of old trees and dead timber



Dead timber left in the Preili park



Veteran tree with special protection status in Preili park



Veteran tree with special protection status in Bebrene park



Special sign informing about the importance of dead timber in Verkiai park





**Thank you for your attention**

