

**Interreg  
Europe**



Co-funded by  
the European Union

**InterRevita**

# Low cost actions to mobilize citizens in climate adaptation

**Ine Pertry**

*City of Roeselare – Project manager climate and energy*

[Ine.pertry@roeselare.be](mailto:Ine.pertry@roeselare.be)

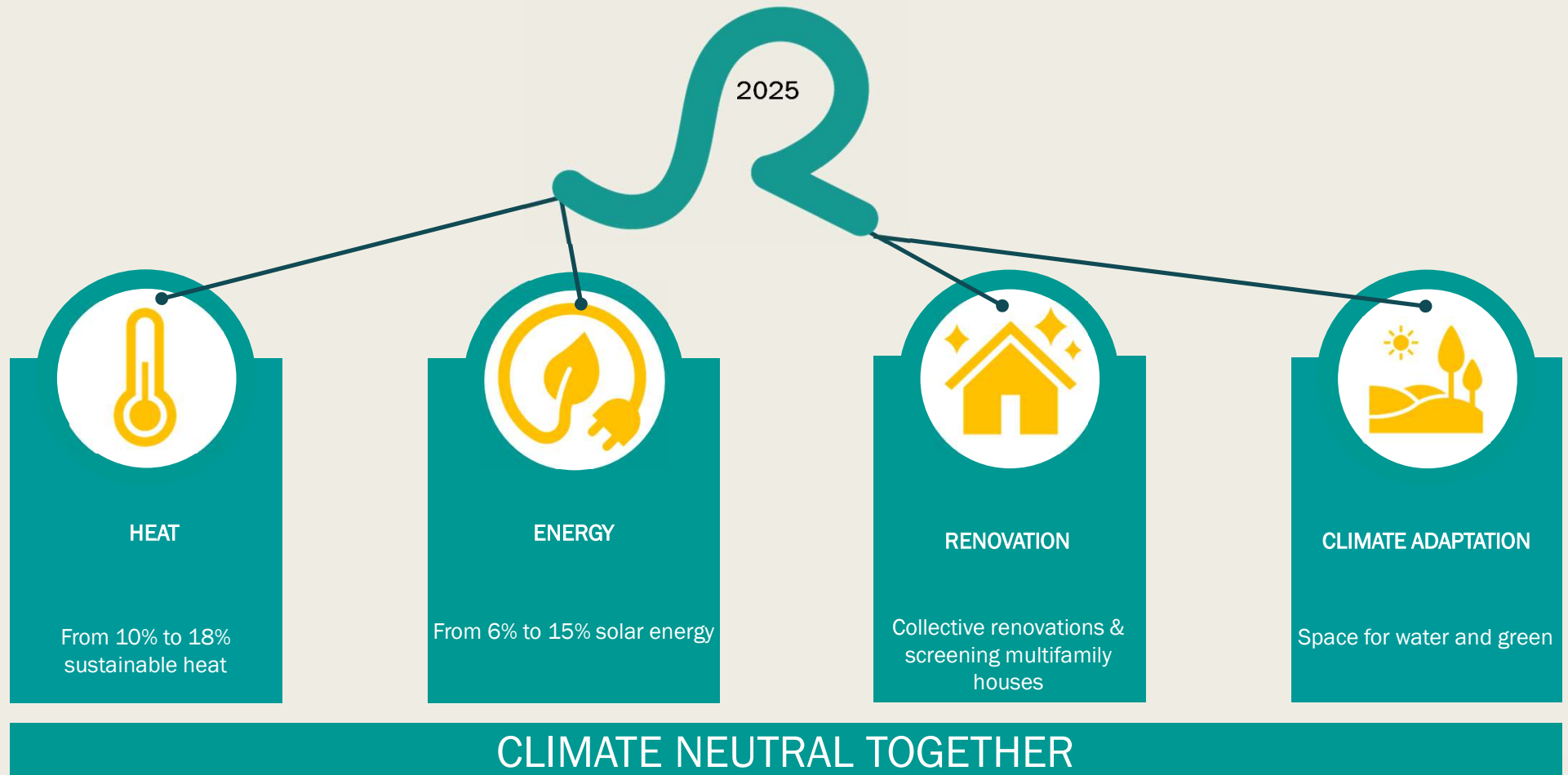
**Dieter Willems**

*City of Roeselare – Public worker green and blue*

[dieter.willems@roeselare.be](mailto:dieter.willems@roeselare.be)

21 August 2025

# Climate switch #VANRSL : 4 cornerstones



# Low cost actions in Roeselare

- Joint purchase of hedges and trees
- Project residential renovation: softening the frontyard
- Greening neighborhoodsquares on demand
- Greening and softening of schoolyards
- Godfather or -morthor of a nearby, smal public planting area
- Interrevita: the importance of fresh water
- Gardenrangers
- Facade gardens





# FACADE GARDENS

LESS GREY, MORE GREEN





# A facade garden

## Definition ?

A facade garden is:

- A narrow strip of greenery,
- often no wider than one or two paving stones,
- placed against the facade of a house.

It's a way to green up a piece of public space, especially in streets where houses don't have front gardens



# A facade garden: how do we work ?

## Citizens do it themselves

- No permit requirement
- There is a reporting obligation

## Citizens work together with their neighbors

- One person is the contact for the city and the neighbors
- The person is looking for minimum seven other participants. Flyers made by the city.
- The contact collects names and addresses
- Information evening for the interested neighbors
- Confirm whether they will participate
- Participants pass on all information to the contact person: the amount of tiles which need to be broken out, the kind of plants they want
- A city contractor breaks out the tiles
- The plants are distributed at a joint moment



THE INFORMATION SESSION:

WHAT IS IT ABOUT?







## A facade garden:

### WHY ?

- Decreasing heat radiation
- Sound-dampening effect
- Dust binding
- Insulation
- Wellness effect: calm, wellbeing
- Water infiltration
- Good for the biodiversity
- Educational function





ONE TILE OR THE  
COMPLETE FACADE?





## A FACADE GARDEN OF ONE METER IS ALSO POSSIBLE

There is still room to place a bicycle





## Advantages of using the whole facade

- More softening = More waterinfiltration
- More variaty = More biodiversity
  - = A longer flowering period
- Greater experience: seasons
- Greater effect on mental health

## Disadvantage

- Need more place
- More maintanance

# What do the regulations say?

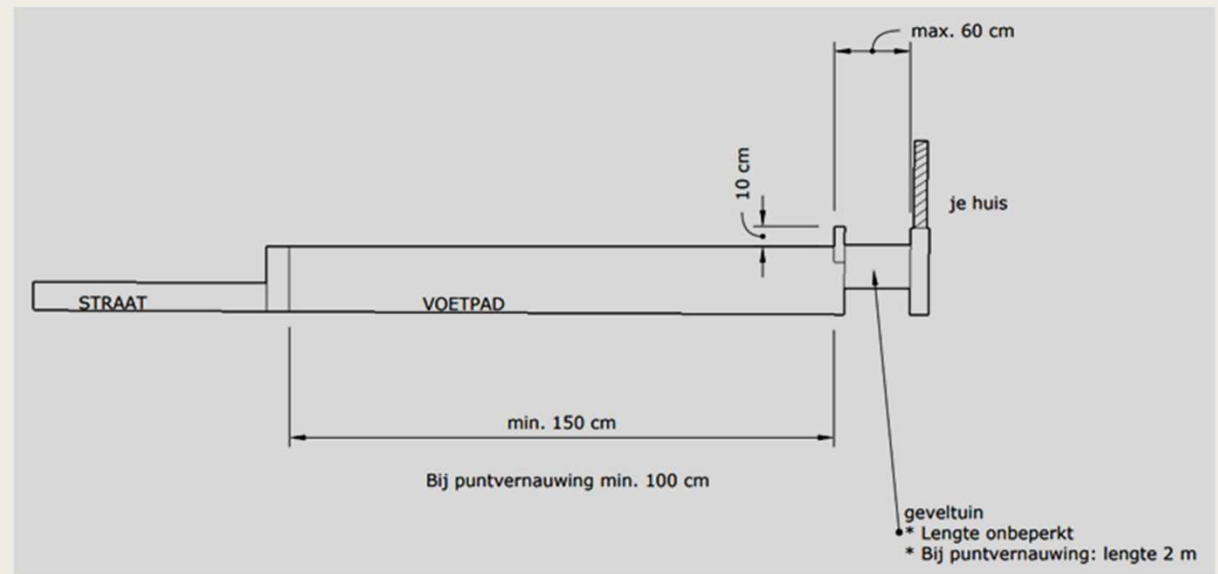
In general: 150 cm free passage and max. 60 cm wide, no restrictions in length

*Narrowing is possible!!*

*BUT max. 2 m long and still min. 100 cm free passage*

Equal width over the entire length of the facadegarden

Height of coping stone max. 10cm







# How do I chose my plants?

1. Orientation
  - *Sun, Partial shade, Shadow*
2. Flower arch
  - *Amount of pollen and nectar is important*
  - *BUT also the distribution throughout the year*
3. High & low – Front & Back
4. What about climbing plants ?





WHAT  
ABOUT  
CLIMBING  
PLANTS?



# Species





The background image shows a close-up of a brick wall. Several brown, woody climbing plant stems are attached to the wall. Some stems are thick and gnarled, while others are thinner. The wall is made of reddish-brown bricks with grey mortar. There is some green moss or algae on the wall, particularly in the lower left corner. A dark, semi-transparent rectangular box is overlaid on the left side of the image, containing white text.

## Clining plants

- Attached to the wall
- No need of climbing aid
- (!) After removal, remains of the adhesive roots may remain on the wall.



A background image showing a brick wall on the left with a climbing plant featuring orange flowers. To the right is a white door with a semi-circular window. A semi-transparent white box containing text is overlaid on the center of the image.

# Winding plants

- Swing around climbing aids (right, left or both directions)
- Cable is necessary
- (!) Can 'strangle' rain pipes







## Vining plants

- Making vines, which vined themselves around climbing aids like springs
  - ↳ Railing or cable



## Support climbers

- Hook onto other plants or climbing aids with thorns or branches
  - ↳ Grow over instead of climbing
  - ↳ Horizontal cables or railing
- Regular tying up and pruning is necessary





## Planting, Maintenance & Care

- Soak plants in water for minutes before planting
- Gently pull the roots to encourage width growth.
- Only water when the top layer is dry
- During a heat wave, check there is still moisture in the soil (finger test)
- Pruning to keep free passage
- Don't remove the fallen leaves
- Apply a layer of organic compost (5 cm.) twice a year
- Keep an eye on the roof and drain pipe
- Attach the climbing plant on the climbing aid





## Patience

- Give your facade garden time to grow
- The maintenance in the first two years is the most important

And above all: **enjoy!**



# THE GARDEN RANGERS

WHAT? HOW?



# What and how ?

- Four volunteers (three male, one female)
- Followed a course about biodiversity
- Citizens can ask them to visit their garden
- The garden ranger recommend some quick wins : a rain barrel, a tree, hedges, a flower meadow, a 'mess corner', a pond, softening the terras or front yard,...
- For each visit they receive 15 euros
- On a regular base I come together with them to enrich each other, to discus some problems, to look how we can do better,...
- Result: in three years, 300 visits



# Participation levels in Roeselare

We use 6 levels of participation. Depending on the issue, we have another strategy of participation.

- Level 1: Inform e.g. by letter
- Level 2: Consult e.g. a meeting
- Level 3: Advise -> little changes are possible e.g. a plan for the reconstruction of the street
- Level 4: Coproduction -> Survey, working groups
- Level 5: Participate in decision making -> concept and implementation
- Level 6: Self-government: e.g. citizen budget

It is up to the communication colleagues to decide which level is necessary/wanted. Of course in consultation with the politicians.