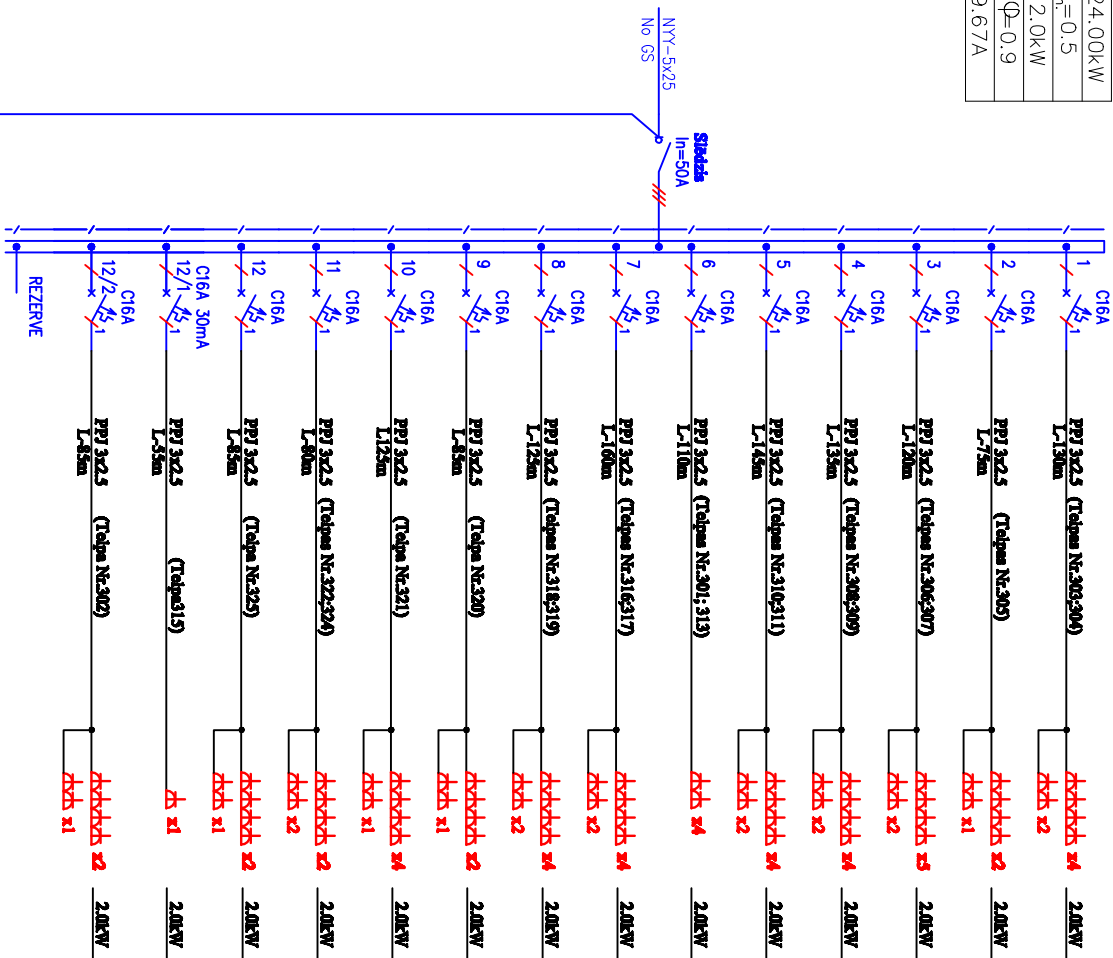


SADALEŠ APRĖJINU SHĖMA SS/AS-3

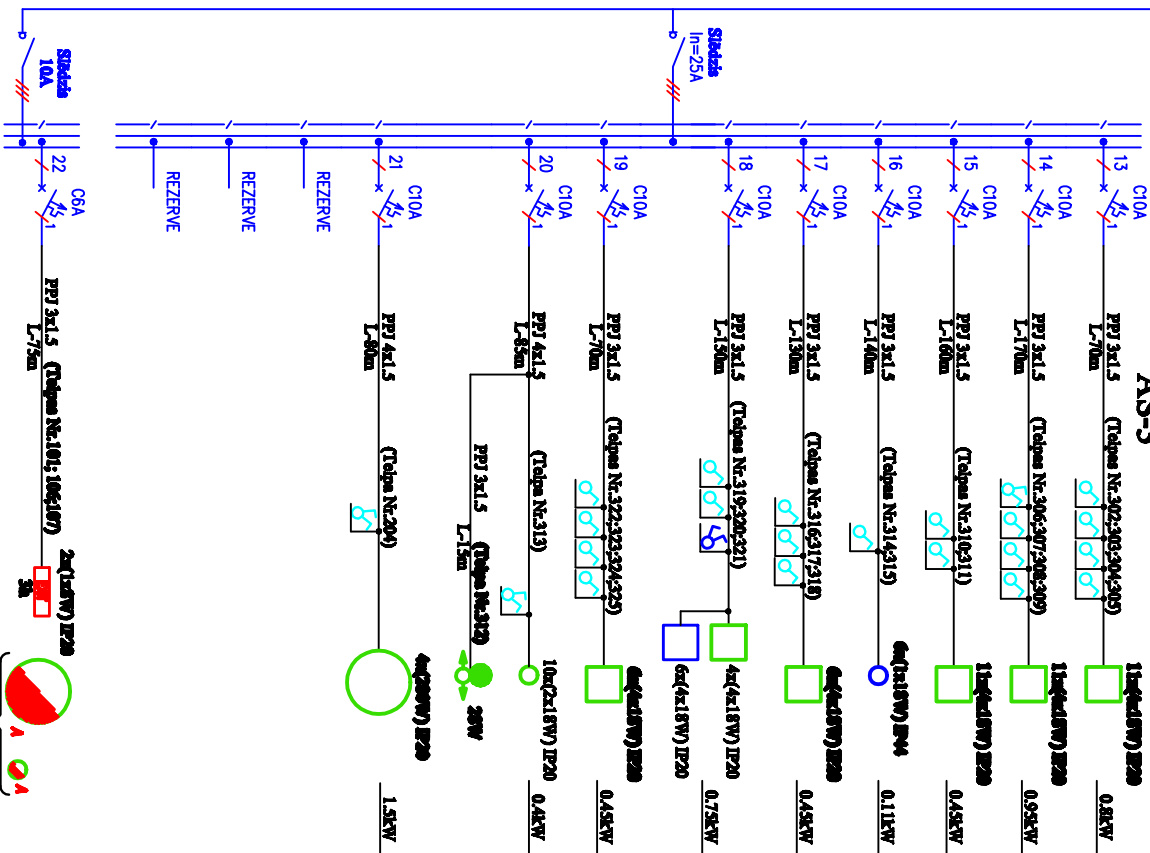
SS-3

$P_u = 24.00 \text{ kW}$
$k_{\text{vien.}} = 0.5$
$P_d = 12.0 \text{ kW}$
$\cos \phi = 0.9$
$I_L = 19.67 \text{ A}$



AS-3

$P_u = 5.91 \text{ kW}$
$k_{\text{vien.}} = 0.9$
$P_g = 5.32 \text{ kW}$
$\cos \phi = 0.9$
$I_A = 8.72 \text{ A}$



w) 

[illegible]